

CIRTL Network MOOCs

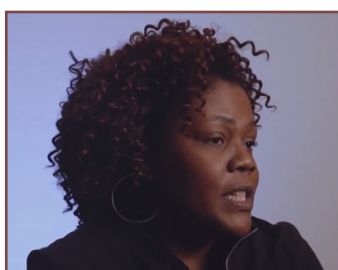
Learn how CIRTL's Massive Open Online Courses (MOOCs) and MOOC learning communities can help local Teaching-as-Research programs

DO YOU WANT to develop and facilitate a local learning community on the use of evidence-based teaching practices? Provide workshops on specific topics (such as Developing a TAR Question, Managing the IRB, or Analyzing the Data)? Run your own TAR course? Develop a teaching certificate program? Do one-on-one advising with TAR students?



CIRTL'S MOOCs & LEARNING COMMUNITIES

offer a wide range of resources that can enhance local Teaching-as-Research (TAR) programs, including videos from MOOC modules (usually 10 minutes or shorter), discussion prompts, assessments, activities, peer supported assignments and suggested readings for numerous topics associated with the use of evidence-based teaching practices and implementing TAR into the classroom.



MOOC MATERIALS CAN HELP YOU

- Run a local learning community while we teach the course
- Run the course with a learning community as an individual offering on your campus
- Use key resources from the MOOCs individually (e.g., videos, readings, engagements) for professional development activities on your campus
- Use full sets/modules of CIRTL MOOCs for professional development (e.g., *Active Learning*, *Inclusive Teaching*, *Teaching-as-Research*, *Learning Through Diversity*, *The Flipped Classroom*)

MATERIALS INCLUDE

- MOOC-Centered Learning Community Facilitators' Guides for two courses:
An Introduction to Evidence-Based Undergraduate STEM Learning
Advancing Learning Through Evidence-Based STEM Teaching
- Syllabi, video clips, discussion questions, assessments, & readings
- Explore what is available at stemteachingcourse.org



CONTACTS

Rique Campa (campa@msu.edu)

Derek Bruff (derek.bruff@vanderbilt.edu)

Bennett Goldberg (bennett.goldberg@northwestern.edu)

Kitch Barnicle (kabarnicle@wisc.edu)

Robin Greenler (rgreenler@wisc.edu)

Noah Green (noah.h.green@vanderbilt.edu)

Visit the CIRTL MOOC website at stemteachingcourse.org or send questions to cirtlmooc@gmail.com



Center for the Integration of Research, Teaching, and Learning
www.cirtl.net