

An Introduction to Career Planning

**Julie Rojewski, Ph.D., Stefanie Baier, Ph.D., and
Henry (Rique) Campa III, Ph.D.**

MSU Graduate School



MSU Graduate School Orientation and Resource Fair

Welcome from President Samuel L. Stanley

- <https://youtu.be/PzmLJR4rjLo>



With a graduate degree from MSU, you'll have many options! Places our graduates work...



Today, you'll learn that...

- It is important to start career planning early.
- The Graduate School offers career and professional development programs and resources to help you plan.
- Professional development is important for all career paths (academic & non-academic).

What will you do with your graduate degree?

E.g., What will you do with your PhD?

- 49% of graduating PhDs do not pursue faculty careers**
- 54% of MSU doctoral students surveyed in 2014 did not have clear career goals when entering graduate school*
- 42% of MSU doctoral students surveyed in 2014 changed their mind about their career goals during graduate school*

*681 MSU doctoral students completed a career needs survey in September 2014

** “Understanding PhD Career Pathways for Program Improvement: A CGS Report” (data from NSF SED)

We have resources for all schedules and preferences



Versatile Ph.D.: Online resource to explore careers, career advice, etc. *Access through our website and log in with MSU ID and Password (we pay for you to have access to this)*



Workshops: Check out our calendar at grad.msu.edu/calendar



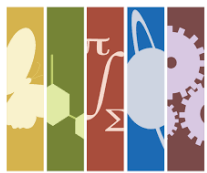
Individual Consultations: Sign up on Handshake for a once-over on your resume or cover letter, or to discuss career specific questions and aspirations.



Broadening Experiences in Scientific Training: A comprehensive program for biomedical science students to develop skills and competencies, and test them in graduate externships.

MSU>BEST

Broadening Experiences in Scientific Training



C I R T L

Online Programs/Activities: to develop a national STEM faculty committed to implementing and advancing effective teaching practices for diverse students as part of successful professional careers.

planning resources, visit: <https://grad.msu.edu/career-planning>



[LOG ON](#) | [CONTACT US](#) | [ABOUT myIDP](#)



You have put a lot of time and effort into pursuing your PhD degree. Now it's time to focus on how to leverage your expertise into a satisfying and productive career. An individual development plan (IDP) helps you explore career possibilities and set goals to follow the career path that fits you best.

myIDP provides:

- Exercises to help you examine your skills, interests, and values
- A list of 20 scientific career paths with a prediction of which ones best fit your skills and interests
- A tool for setting strategic goals for the coming year, with optional reminders to keep you on track
- Articles and resources to guide you through the process

There is no charge to use this site and we encourage you to return as often as you wish. To learn more about the value of IDPs for scientists, read the first article in our myIDP series.

Click below to get started.

[First Time Here?](#)

[Returning User](#)

Authored by:

Cynthia N. Fuhrmann, Ph.D. (UCSF) Jennifer A. Hobin, Ph.D. (FASEB)
Bill Lindstaedt, M.S. (UCSF) Philip S. Clifford, Ph.D. (MCW)

Site authored by C.N. Fuhrmann, J.A. Hobin, B. Lindstaedt, P.S. Clifford. All Rights Reserved.
Copyright © 2011, 2015 American Association for the Advancement of Science. All Rights Reserved. Read our privacy policy/legal terms

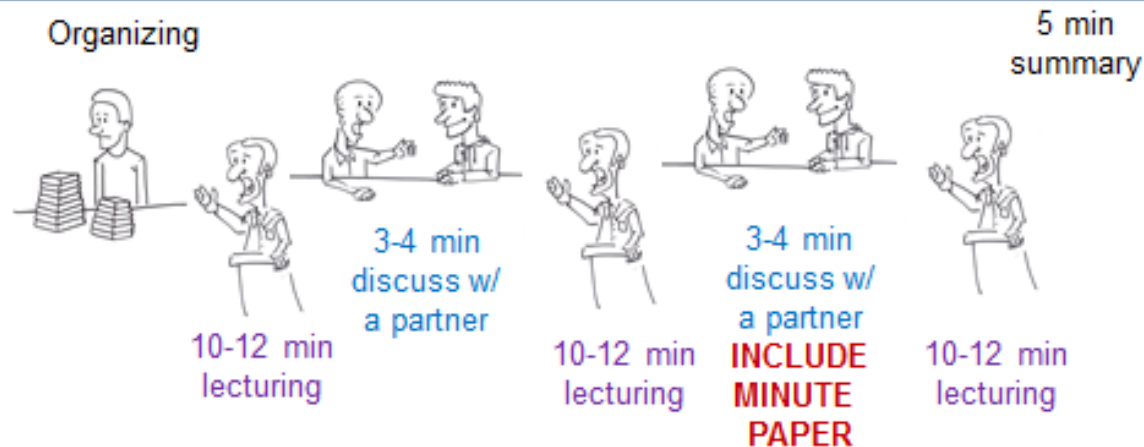
Humanities and Social Sciences
Imaginephd.com

**Science, engineering, and
mathematics**
myidp.sciencecareers.org



Teaching Development is an important part of career development!

Vary discussion and lecturing periods based on needs



Center for the Integration of Research, Teaching and Learning (CIRTL) <https://www.cirtl.net/>



Center for the Integration of Research, Teaching and Learning

Committed to advancing the teaching of STEM disciplines in higher education.

[Learn more about CIRTL](#)



Network News

Announcement

Fall 2018 Programming Preview

August 07, 2018

[More Network News](#)

The CIRTL Mission

The CIRTL mission is to enhance excellence in undergraduate education through the development of a national faculty committed to implementing and

stemteachingcourse.org

Home

Our Courses

Syllabi

Learning Communities



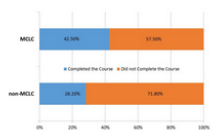

Course Content

Data and Dissemination

About Us



CIRTL Massive Open Online Courses

<p>Course 1 will begin June 24th, 2019.</p> <p>Enroll Here!</p>	<p><u>Local learning communities</u></p> 	<p><u>Preview our course content</u></p> 	<p><u>Previous course data and presentations</u></p>  <table border="1"> <thead> <tr> <th>Group</th> <th>Completed the Course</th> <th>Did not Complete the Course</th> </tr> </thead> <tbody> <tr> <td>MOLE</td> <td>82.5%</td> <td>17.5%</td> </tr> <tr> <td>Non MOLE</td> <td>25.0%</td> <td>75.0%</td> </tr> </tbody> </table>	Group	Completed the Course	Did not Complete the Course	MOLE	82.5%	17.5%	Non MOLE	25.0%	75.0%	<p><u>Learn about us and course creation</u></p> 
Group	Completed the Course	Did not Complete the Course											
MOLE	82.5%	17.5%											
Non MOLE	25.0%	75.0%											

Course 1: An Introduction to Evidence-Based Undergraduate STEM Teaching

"An Introduction to Evidence-Based Undergraduate STEM Teaching" is an open, online course designed to provide future STEM faculty, graduate students and post-doctoral fellows with an introduction to effective teaching strategies and the research that supports them. The goal of the eight-week course is to equip the next generation of STEM faculty to be effective teachers, thus improving the learning experience for the thousands of students they will teach.

From @WildCora on Twitter: "The intro course changed my teaching life. If you plan to teach, please try this course. Your students will thank you. #STEMed #effectiveteaching #postdoclife"

"Excellent and enlightening lectures, materials, and concepts! The PGAs allowed me to try applying and practicing the content. Would strongly recommend." -Summer 2018 Participant



Keepteaching.msu.edu
remote.msu.edu/teaching

<https://tech.msu.edu/>

<https://tech.msu.edu/support/help>



Virtual Lunch & Learn Best Practices

Every other Wednesday from Noon until 1pm



First Session on September 9, 2020 via Zoom

Check the Graduate School Calendar for Registration and Zoom Mtg Info

The Graduate School

CALENDAR FACULTY/STAFF RESOURCES POSTDOCS GIVING

ABOUT ADMISSIONS ACADEMICS MENTORING PROFESSIONAL DEVELOPMENT FUNDING GRAD STUDENT LIFE DIVERSITY

Teaching

Graduate Teaching
Assistant ProgramInternational Graduate
Teaching AssistantsCertification in College
TeachingTeaching Communities
and Fellowships

#iteachmsu

Teaching Resources

Certification in College Teaching

HOME > PROFESSIONAL DEVELOPMENT > TEACHING

The University Graduate Certification in College Teaching (CCT), an initiative of the Michigan State University Graduate School in partnership with MSU colleges, helps graduate students and postdocs organize, develop, and document their teaching experiences. Through professional development activities - workshops or seminars, coursework in disciplinary teaching methods, a mentored teaching project - participants will build and consolidate their preparation for college and university teaching. The program culminates in an eportfolio that will help participants prepare for academic job interviews and plan for their professional development as early career faculty.

Attention: Graduate students and postdocs who are ready to submit the FINAL version of their portfolios for review, please use this [Portfolio Submission Form](#).

— ▶ [What are the goals and benefits of the CCT?](#) —

— ▶ [What are the learning objectives for the CCT?](#) —

— ▶ [What are the competencies and components of the CCT?](#) —

CCT Menu

[CCT Home](#)[CCT Requirements](#)[CCT Portfolio Resources
and Samples](#)[CCT Institute](#)[CCT College Coordinators](#)



The Graduate School

[CALENDAR](#) [FACULTY/STAFF RESOURCES](#) [POSTDOCS](#) [GIVING](#)[ABOUT](#) [ADMISSIONS](#) [ACADEMICS](#) [MENTORING](#) [PROFESSIONAL DEVELOPMENT](#) [FUNDING](#) [GRAD STUDENT LIFE](#) [DIVERSITY](#)

Teaching

[Graduate Teaching Assistant Program](#)[International Graduate Teaching Assistants](#)[Certification in College Teaching](#)[Teaching Communities and Fellowships](#)[#iteachmsu](#)[Teaching Resources](#)

Teaching Communities and Fellowships

[HOME](#) [PROFESSIONAL DEVELOPMENT](#) [TEACHING](#)

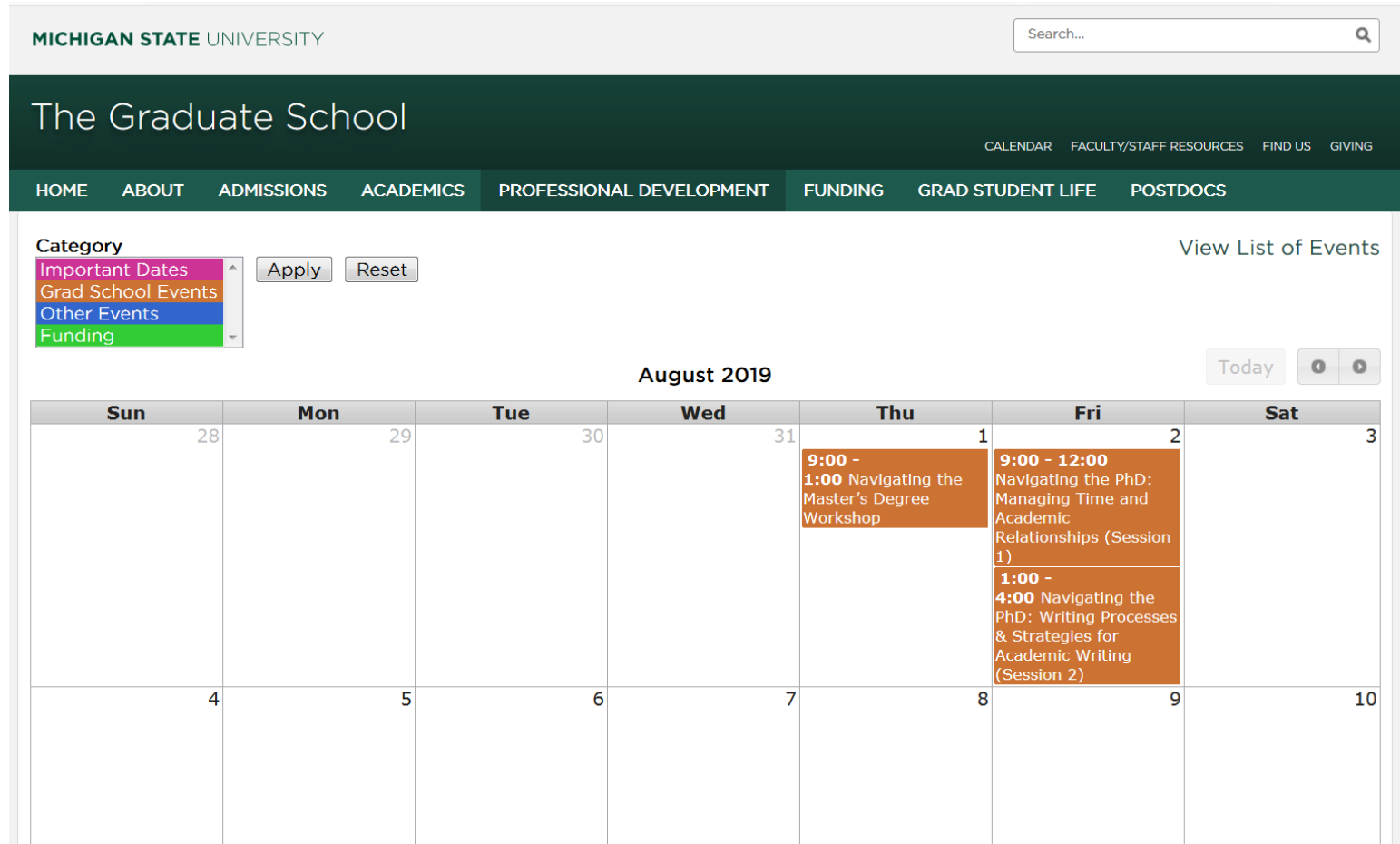
The Graduate School collaborates with academic units to offer several year-long fellowship programs for people interested in participating in communities of practice with other graduate students. While in each of these fellowship programs, graduate students undertake year-long inquiry projects related to student learning in their disciplinary contexts.

More information on these fellowship programs can be found in the Cohort Fellowships menu.

Cohort Fellowships

[FAST Fellows](#)[RCAH Fellows](#)[IIT Fellow Program](#)[Bailey Scholars Program Fellows](#)[SUTL Fellows](#)[Graduate School Writing Fellows](#)

See our calendar of events at: grad.msu.edu/calendar



COVID Times: A Weird and Unique Opportunity

There are numerous online resources and opportunities available to you, and trainings are accessible to you in ways that they haven't been before.

1. Schedule time in your week for professional development.
2. Cast a wide net in your interests and goals.
3. Find opportunities.
4. Participate in them.*



*If you sign up to participate in something, actually attend. If something comes up and you can't attend, let the planners know. It's unprofessional to claim spots in opportunities that you can't or won't use.

For more information and to connect join us in our booths from 10 am – 12 pm!

ESSENTIAL CAMPUS GROUPS AND RESOURCES

TUNE INTO THEIR ZOOM MEETINGS ON AUGUST 29 BETWEEN 10AM AND 12PM. THESE ARE MEANT TO BE INFORMAL CONVERSATIONS AND YOU CAN JUMP ON AND OFF MEETINGS AT YOUR LEISURE.

Diversity, Equity & Inclusion
&
AGEP

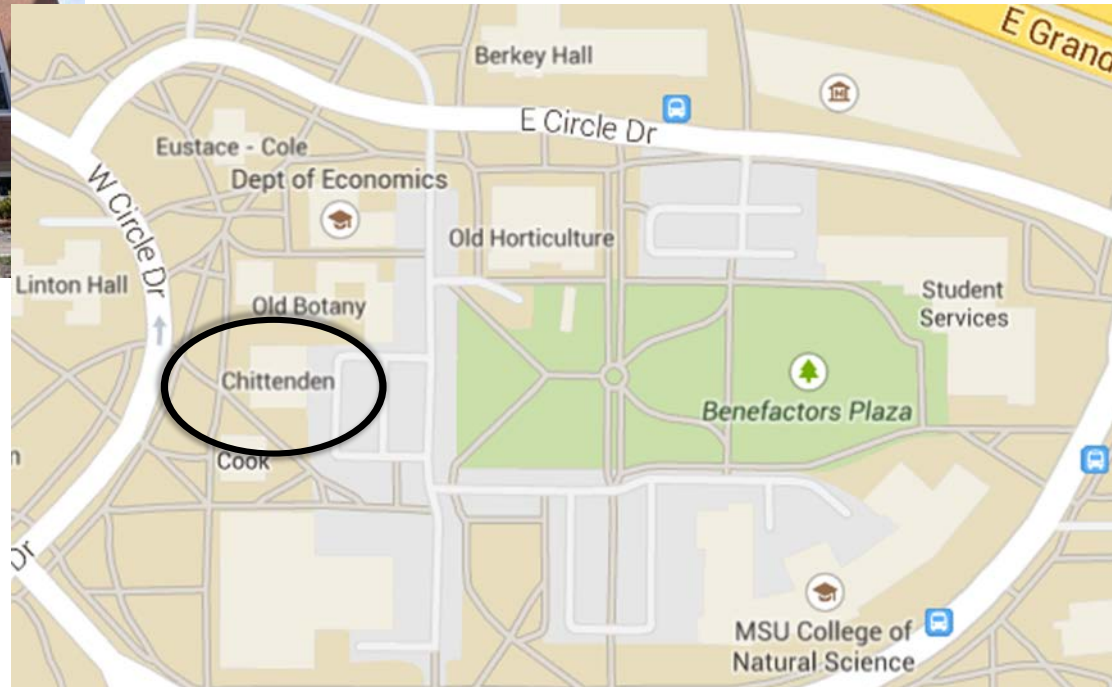
PhD Career Services
&
BEST

Graduate Student Life
&
Wellness

Graduate Teaching

Visit the Graduate School at Chittenden Hall

(when we're all back on campus)



Julie Rojewski

rojewsj@msu.edu

Stefanie Baier

stbaier@msu.edu

Rique Campa

campa@msu.edu